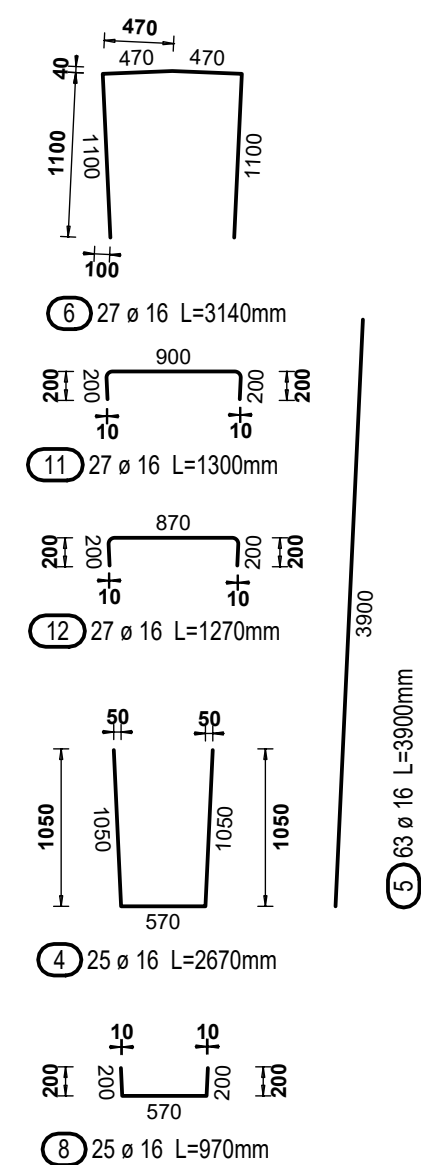
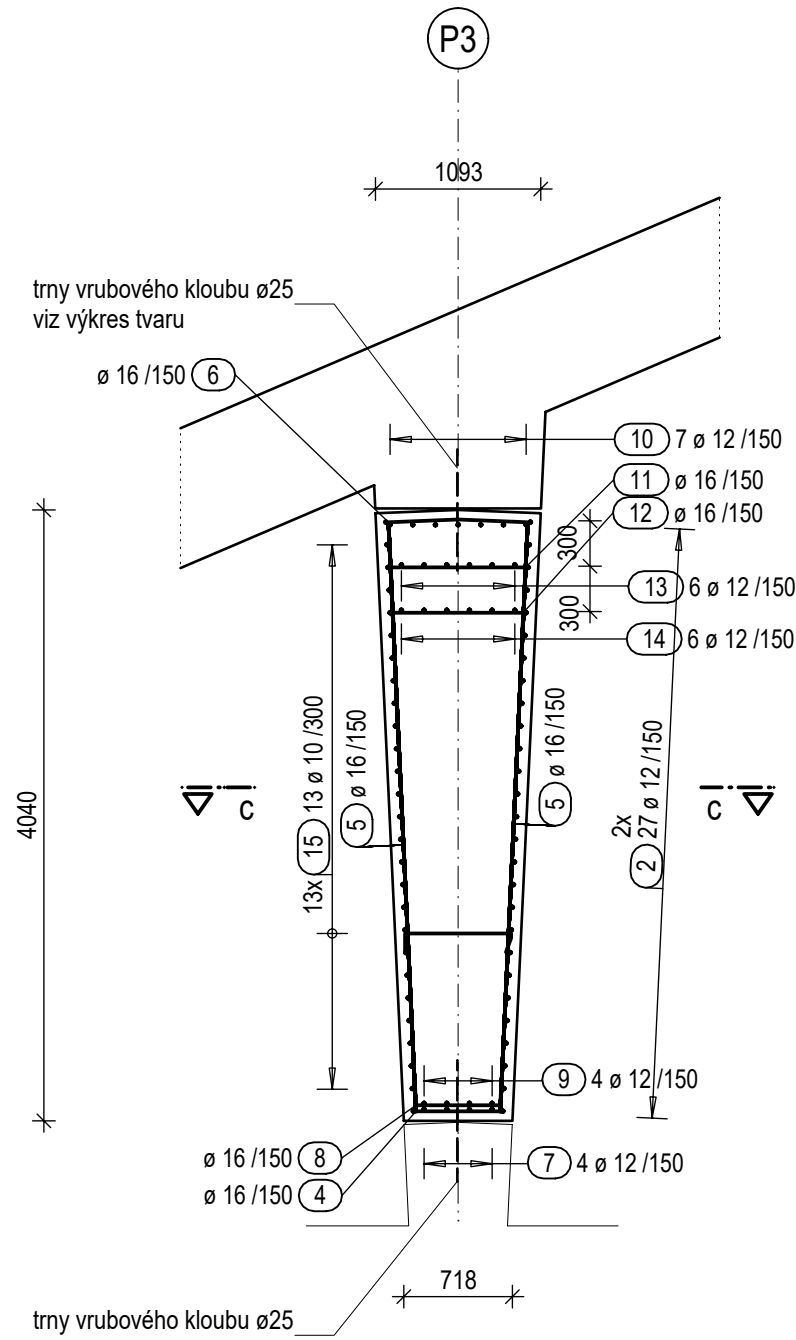
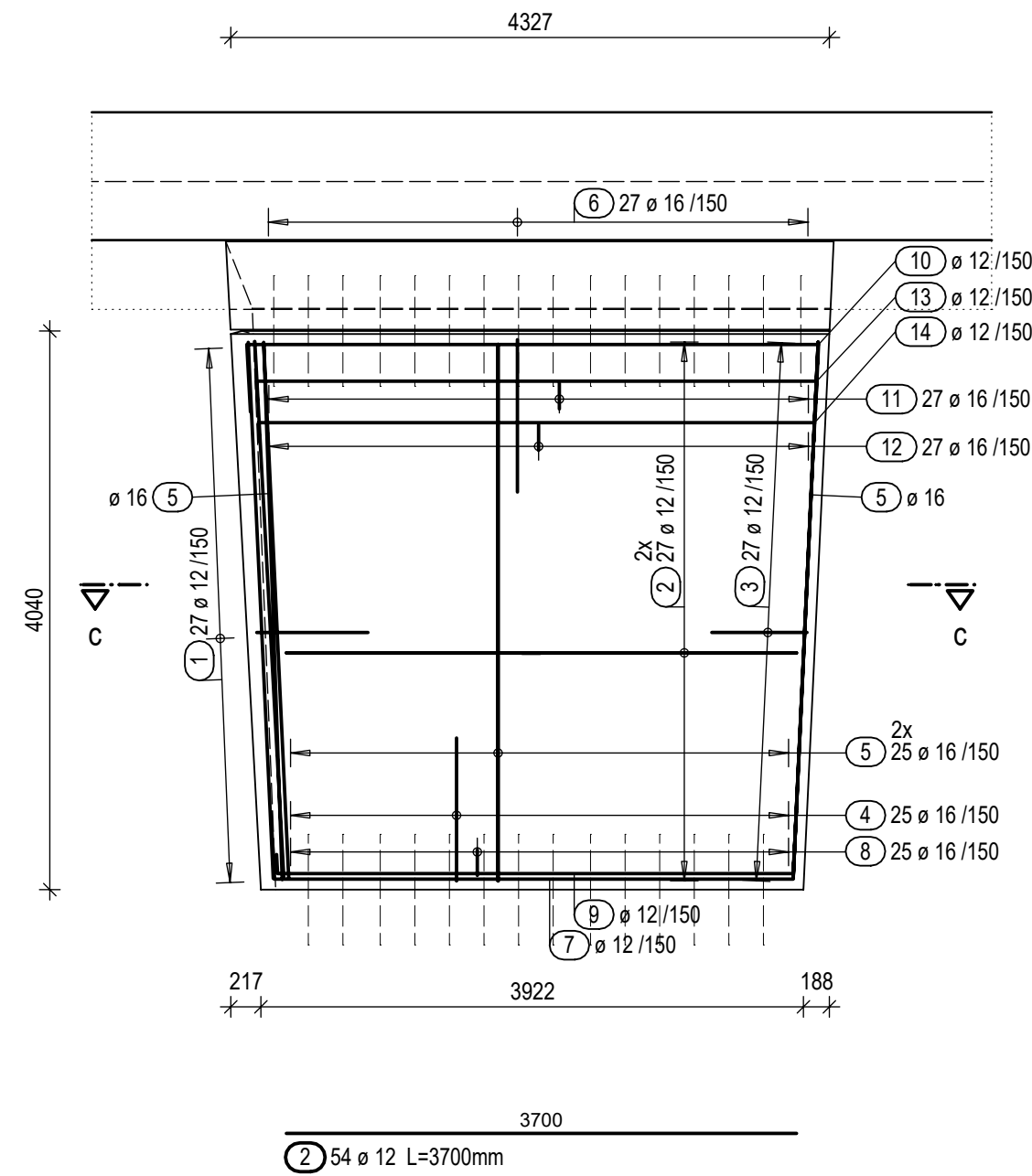


Pilíř P3.1

Řez a - a
M 1:50



Pohled b - b
M 1:50



| Tvar | Ks | Délka a [mm] | Délka Jeden prut [mm] | Délka Celkem [mm] |
|-------|----|--------------|-----------------------|-------------------|
| 15.1 | 13 | 960 | 1220 | 15860 |
| 15.2 | 13 | 940 | 1200 | 15600 |
| 15.3 | 13 | 910 | 1170 | 15210 |
| 15.4 | 13 | 880 | 1140 | 14820 |
| 15.5 | 13 | 850 | 1110 | 14430 |
| 15.6 | 13 | 820 | 1080 | 14040 |
| 15.7 | 13 | 800 | 1060 | 13780 |
| 15.8 | 13 | 770 | 1030 | 13390 |
| 15.9 | 13 | 740 | 1000 | 13000 |
| 15.10 | 13 | 710 | 970 | 12610 |
| 15.11 | 13 | 680 | 940 | 12220 |
| 15.12 | 13 | 660 | 920 | 11960 |
| 15.13 | 13 | 630 | 890 | 11570 |

| Tvar | Ks | Délka a [mm] | Délka Jeden prut [mm] | Délka Celkem [mm] |
|------|----|--------------|-----------------------|-------------------|
| 7.1 | 1 | 3760 | 4760 | 4760 |
| 7.2 | 1 | 3740 | 4740 | 4740 |
| 7.3 | 1 | 3720 | 4720 | 4720 |
| 7.4 | 1 | 3690 | 4690 | 4690 |

| Tvar | Ks | Délka a [mm] | Délka Jeden prut [mm] | Délka Celkem [mm] |
|------|----|--------------|-----------------------|-------------------|
| 9.1 | 1 | 3760 | 4060 | 4060 |
| 9.2 | 1 | 3740 | 4040 | 4040 |
| 9.3 | 1 | 3720 | 4020 | 4020 |
| 9.4 | 1 | 3690 | 3990 | 3990 |

Výkaz výztuže

| Pol. | Ks | Ø [mm] | Jednotl. délka [m] | Celková délka [m] | Hmotnost [kg] |
|------|-----|--------|--------------------|-------------------|---------------|
| 1 | 27 | 12 | -X- | 61.72 | 54.81 |
| 2 | 54 | 12 | 3.70 | 199.80 | 177.42 |
| 3 | 27 | 12 | -X- | 59.02 | 52.41 |
| 4 | 25 | 16 | 2.67 | 66.75 | 105.47 |
| 5 | 63 | 16 | 3.90 | 245.70 | 388.21 |
| 6 | 27 | 16 | 3.14 | 84.78 | 133.95 |
| 7 | 4 | 12 | -X- | 18.91 | 16.79 |
| 8 | 25 | 16 | 0.97 | 24.25 | 38.32 |
| 9 | 4 | 12 | -X- | 16.11 | 14.31 |
| 10 | 7 | 12 | -X- | 35.69 | 31.69 |
| 11 | 27 | 16 | 1.30 | 35.10 | 55.46 |
| 12 | 27 | 16 | 1.27 | 34.29 | 54.18 |
| 13 | 6 | 12 | -X- | 26.24 | 23.30 |
| 14 | 6 | 12 | -X- | 26.06 | 23.14 |
| 15 | 169 | 10 | -X- | 178.49 | 110.13 |

Celková hmotnost [kg] : 1279.59

| Tvar | Ks | Délka a [mm] | Délka Jeden prut [mm] | Délka Celkem [mm] |
|------|----|--------------|-----------------------|-------------------|
| 10.1 | 1 | 4170 | 5170 | 5170 |
| 10.2 | 1 | 4140 | 5140 | 5140 |
| 10.3 | 1 | 4120 | 5120 | 5120 |
| 10.4 | 1 | 4100 | 5100 | 5100 |
| 10.5 | 1 | 4080 | 5080 | 5080 |
| 10.6 | 1 | 4050 | 5050 | 5050 |
| 10.7 | 1 | 4030 | 5030 | 5030 |

Celková délka = 35.690 m

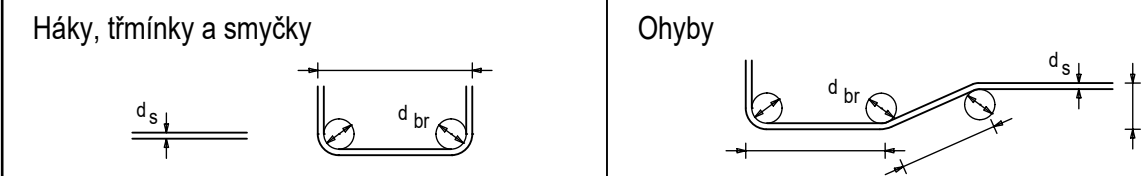
| Tvar | Ks | Délka a [mm] | Délka Jeden prut [mm] | Délka Celkem [mm] |
|------|----|--------------|-----------------------|-------------------|
| 13.1 | 1 | 4130 | 4430 | 4430 |
| 13.2 | 1 | 4110 | 4410 | 4410 |
| 13.3 | 1 | 4080 | 4380 | 4380 |
| 13.4 | 1 | 4060 | 4360 | 4360 |
| 13.5 | 1 | 4040 | 4340 | 4340 |
| 13.6 | 1 | 4020 | 4320 | 4320 |

Celková délka = 26.240 m

| Tvar | Ks | Délka a [mm] | Délka Jeden prut [mm] | Délka Celkem [mm] |
|------|----|--------------|-----------------------|-------------------|
| 14.1 | 1 | 4100 | 4400 | 4400 |
| 14.2 | 1 | 4080 | 4380 | 4380 |
| 14.3 | 1 | 4050 | 4350 | 4350 |
| 14.4 | 1 | 4030 | 4330 | 4330 |
| 14.5 | 1 | 4010 | 4310 | 4310 |
| 14.6 | 1 | 3990 | 4290 | 4290 |

Celková délka = 26.060 m

Schéma ohybu výztuže



Třmínky a ohyby jsou kótovány k vnějšímu povrchu

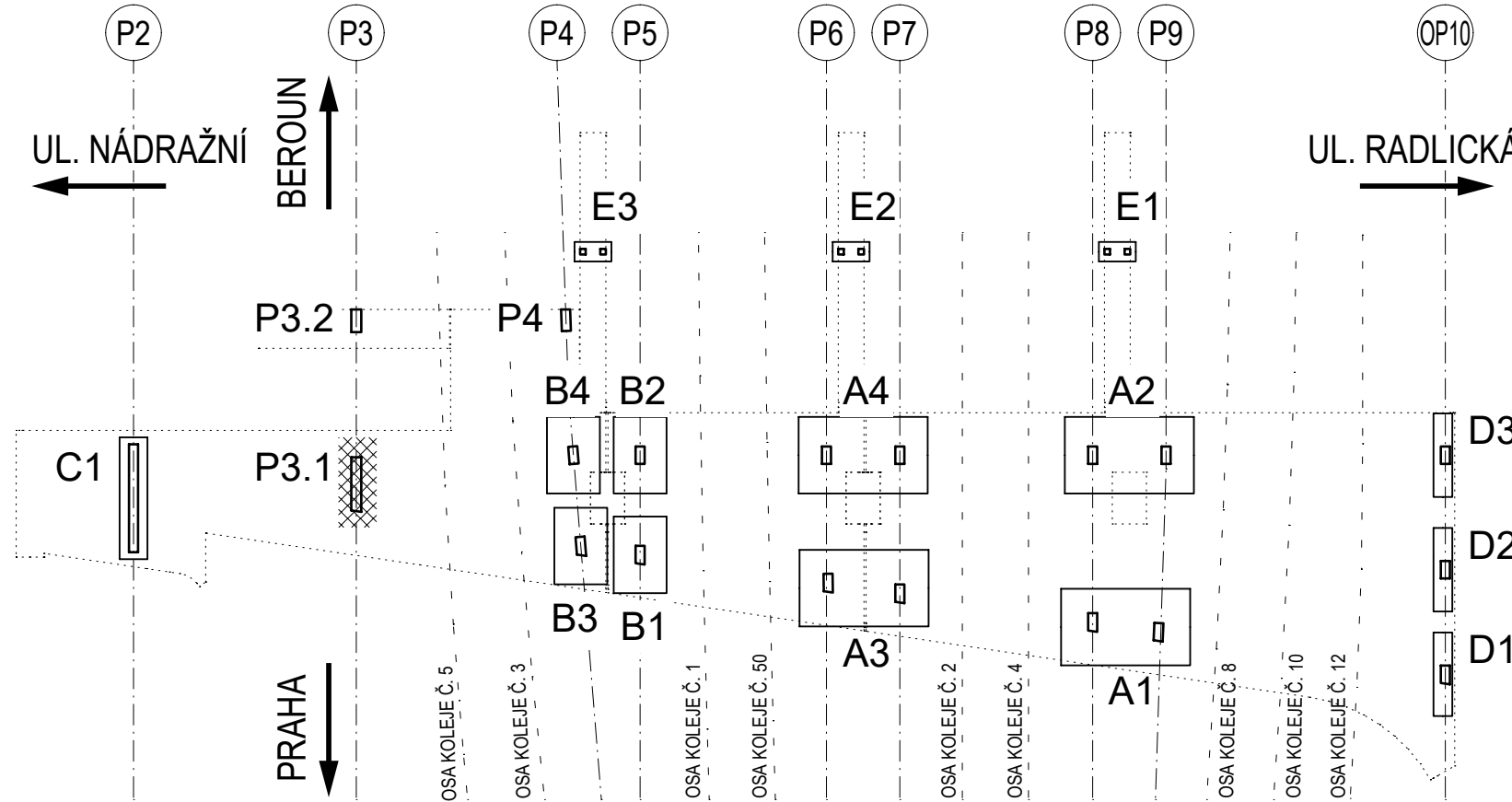
| d s (mm) | Háky a třmínky | Smyčky | Krytí betonem (výztuž v jedné vrstvě) | Vnější vrstva (výztuž ve více vrstvách) | Vnitřní vrstva (výztuž ve více vrstvách) |
|----------|----------------|----------|---------------------------------------|---|--|
| < 20 | 4.0 d s | 10.0 d s | > 50mm a > 3 d s | 15 d s | 22 ⁵ d s |
| 20 - 28 | 7.0 d s | | ≤ 50mm a ≤ 3 d s | 20 d s | 30 d s |

Kóty výztuže v mm

Krytí výztuže betonem v mm (c min / c nom)

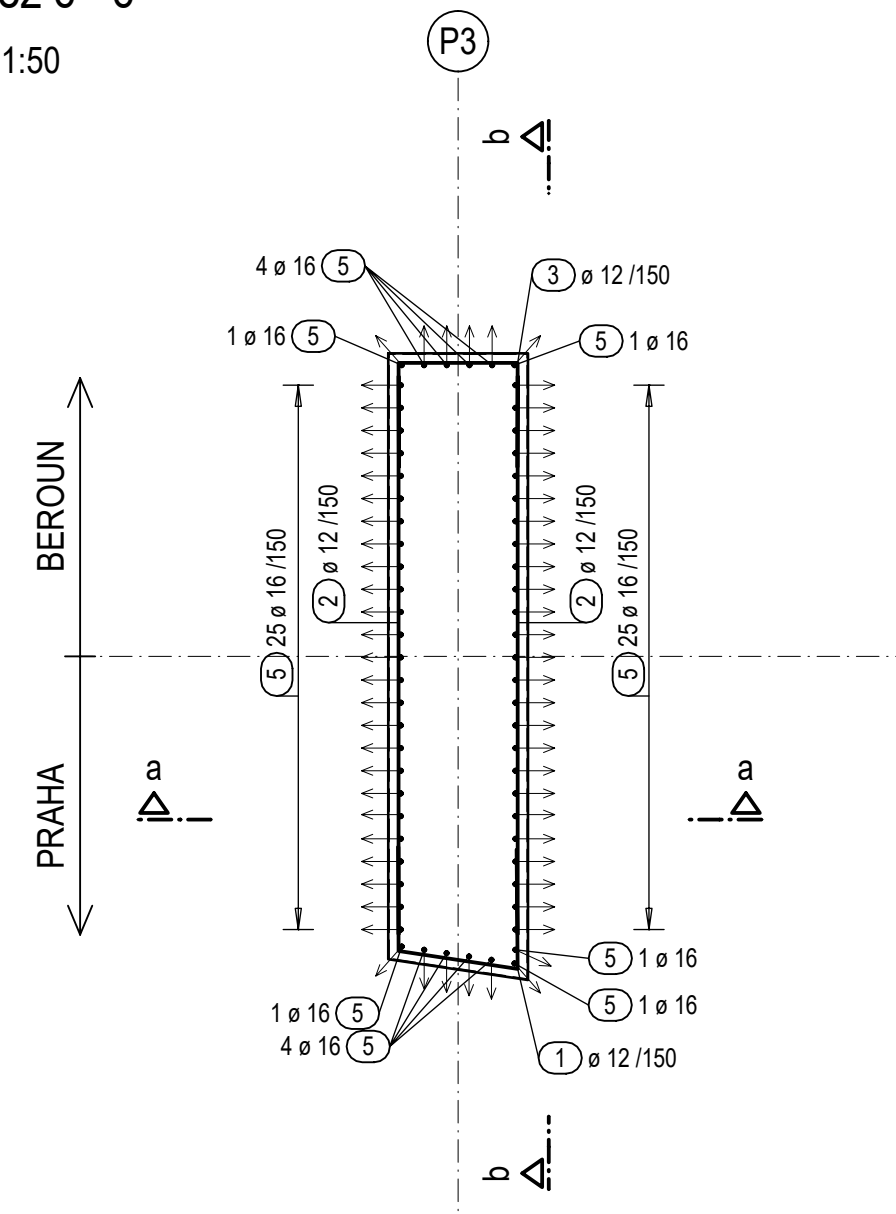
| Stavební část | dřík | | |
|---------------|------------------|--|--|
| horní (h.) | 45 / 55 | | |
| spodní (s.) | 45 / 55 | | |
| boční (b.) | 45 / 55 | | |
| Beton | C 35/45 XF2, XD1 | | |
| Ocel | B 500B | | |

Schéma 1:500



Řez c - c

M 1:50



| Tvar | Ks | Délka a [mm] | Délka Jeden prut [mm] | Délka Celkem [mm] |
|------|----|--------------|-----------------------|-------------------|
| 1.1 | 1 | 610 | 2100 | 2100 |
| 1.2 | 1 | 620 | 2110 | 2110 |
| 1.3 | 1 | 630 | 2120 | 2120 |
| 1.4 | 1 | 650 | 2140 | 2140 |
| 1.5 | 1 | 660 | 2160 | 2160 |
| 1.6 | 1 | 680 | 2180 | 2180 |
| 1.7 | 1 | 690 | 2190 | 2190 |
| 1.8 | 1 | 700 | 2200 | 2200 |
| 1.9 | 1 | 720 | 2220 | 2220 |
| 1.10 | 1 | 730 | 2230 | 2230 |
| 1.11 | 1 | 750 | 2250 | 2250 |
| 1.12 | 1 | 760 | 2260 | 2260 |
| 1.13 | 1 | 770 | 2270 | 2270 |
| 1.14 | 1 | 790 | 2290 | 2290 |
| 1.15 | 1 | 800 | 2300 | 2300 |
| 1.16 | 1 | 820 | 2320 | 2320 |
| 1.17 | 1 | 830 | 2330 | 2330 |
| 1.18 | 1 | 850 | 2350 | 2350 |
| 1.19 | 1 | 860 | 2360 | 2360 |
| 1.20 | 1 | 870 | 2370 | 2370 |
| 1.21 | 1 | 890 | 2390 | 2390 |
| 1.22 | 1 | 900 | 2400 | 2400 |
| 1.23 | 1 | 920 | 2420 | 2420 |
| 1.24 | 1 | 930 | 2420 | 2420 |
| 1.25 | 1 | 940 | 2430 | 2430 |
| 1.26 | 1 | 960 | 2450 | 2450 |
| 1.27 | 1 | 970 | 2460 | 2460 |

Celková délka = 61.720 m

| Tvar | Ks | Délka a [mm] | Délka Jeden prut [mm] | Délka Celkem [mm] |
|------|----|--------------|-----------------------|-------------------|
| 3.1 | 1 | 970 | 2370 | 2370 |
| 3.2 | 1 | 950 | 2350 | 2350 |
| 3.3 | 1 | 940 | 2340 | 2340 |
| 3.4 | 1 | 930 | 2330 | 2330 |
| 3.5 | 1 | 910 | 2310 | 2310 |
| 3.6 | 1 | 900 | 2300 | 2300 |
| 3.7 | 1 | 880 | 2280 | 2280 |
| 3.8 | 1 | 870 | 2270 | 2270 |
| 3.9 | 1 | 860 | 2260 | 2260 |
| 3.10 | 1 | 840 | 2240 | 2240 |
| 3.11 | 1 | 830 | 2230 | 2230 |
| 3.12 | 1 | 810 | 2210 | 2210 |
| 3.13 | 1 | 800 | 2200 | 2200 |
| 3.14 | 1 | 790 | 2190 | 2190 |
| 3.15 | 1 | 770 | 2170 | 2170 |
| 3.16 | 1 | 760 | 2160 | 2160 |
| 3.17 | 1 | 740 | 2140 | 2140 |
| 3.18 | 1 | 730 | 2130 | 2130 |
| 3.19 | 1 | 720 | 2120 | 2120 |
| 3.20 | 1 | 700 | 2100 | 2100 |
| 3.21 | 1 | 690 | 2090 | 2090 |
| 3.22 | 1 | 670 | 2070 | 2070 |
| 3.23 | 1 | 660 | 2060 | 2060 |
| 3.24 | 1 | 650 | 2050 | 2050 |
| 3.25 | 1 | 630 | 2030 | 2030 |
| 3.26 | 1 | 620 | 2020 | 2020 |
| 3.27 | 1 | 600 | 2000 | 2000 |

Celková délka = 59.020 m